

**BAMM
BAMM**

I-PLUS

Interiors + Detail

**The Sheikh Zayed Private Academy
German School Auditorium
Multi-Facility Municipal Building
André Malraux's Group of Schools
HF & VUC FYN
St James Design Technology Block**



I-PLUS
Interiors + Detail

EDUCATION FACILITY

**SJD PRAZIUM
HOTEL VENICE**



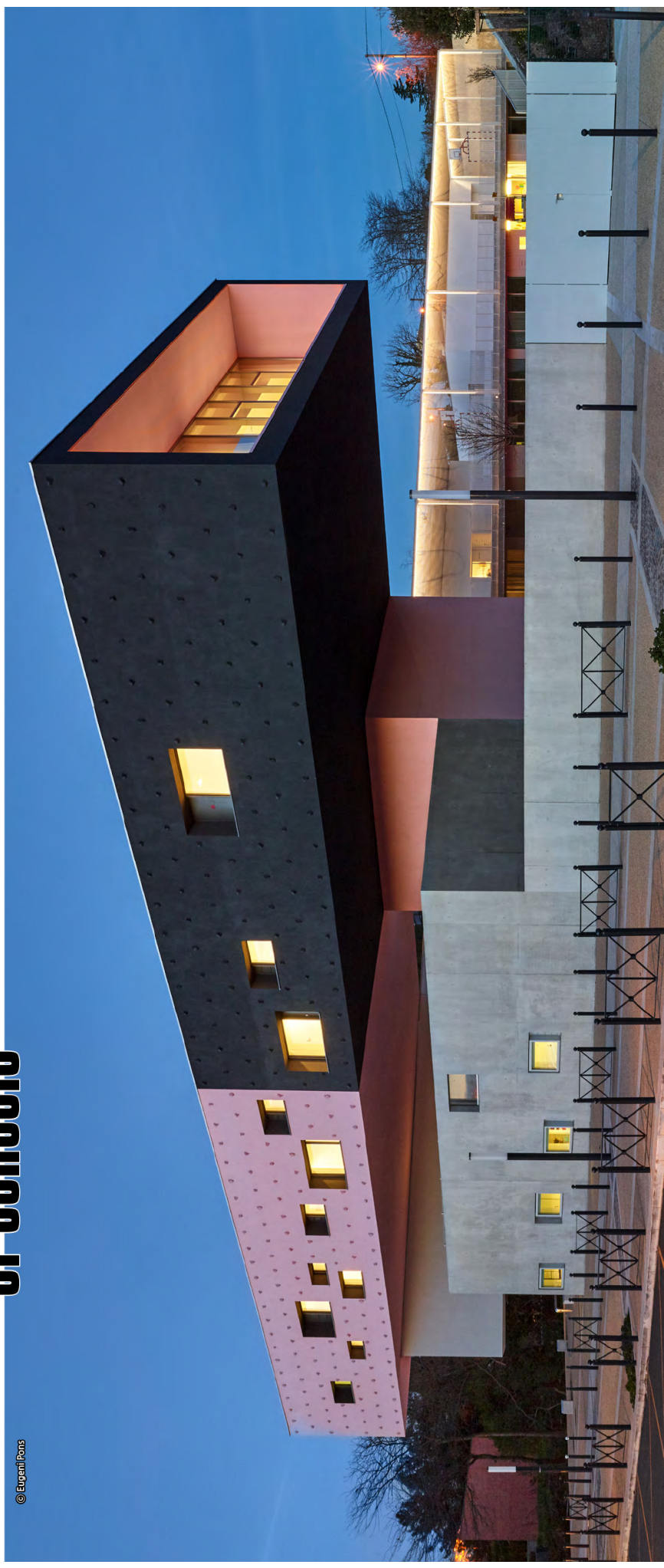
No. 009

EDUCATION FACILITY

André Malraux's group of schools

Dominique coulon & associés

Dominique Coulon is born in 1961. In 1989 he is graduate with the professor and architect Henri Ciriani and he created his own studio. In 1990, he receives a special prize for the international competition of The Japan Culture House in Paris. In 1991, He is the winner of «La Villa Médicis hors les murs» and travels in USA, South America and Europe. In 1996, he receives the «1ère oeuvre» prize for the college Pasteur in Strasbourg.

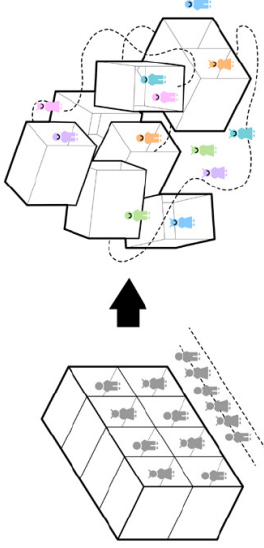


© Eugène Petit



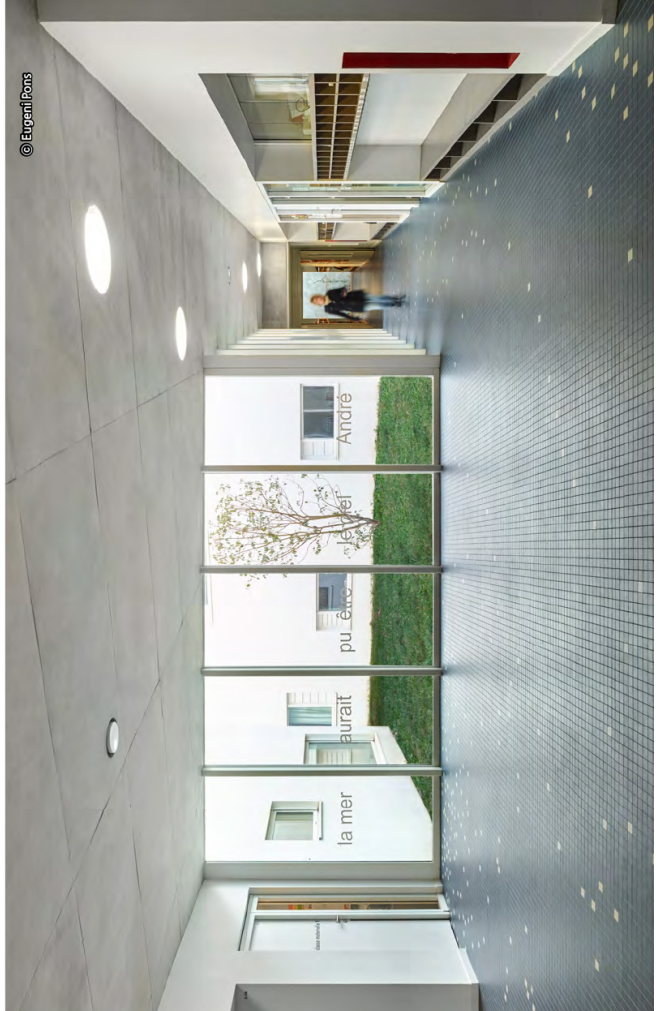
© Eugène Pons

Location: 89 Avenue Jean Miro 34000 Montpellier, France
 Area: 3,444m²
 Design: Dominique Coulon & associés
 Designer: Dominique Coulon, Steve Letho Duclos
 Design Assistants: Fanny Liénart, Olivier Poulat
 Construction Site Supervisor: Steve Letho Duclos, Olivier Poulat
 Structural Engineer: Fabrice Ingénierie
 Mechanical Plumbing Engineer: Solares Bauen
 Electrical Engineer: BET G.Jost
 Cost Estimator: E3 économie
 Acoustics: Euro sound project
 Landscape: Bruno Kubler
 Client: Ville de Montpellier
 Photographer: Eugène Pons, Photographer

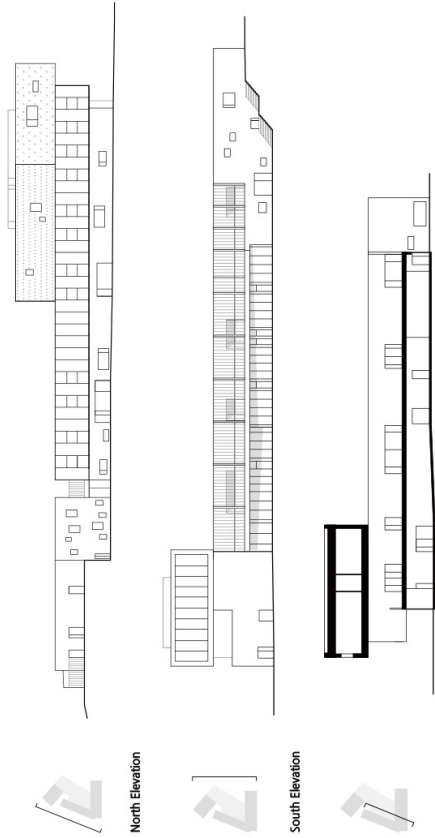


traditional building

school adapted to children's behaviour :
richer and more elastic spaces



© Eugène Pons



North Elevation

South Elevation

Section



The school unit is part of Montpellier's dynamic for development, the aim being to connect the city with the sea. The school is set on a small triangular plot of land, in keeping with the urban policy for densifying a new residential area. The ground floor is taken up by the nursery school and the centre for before- and after-school activities. The primary school occupies the other two floors, with its playground on top of the nursery school. The volumes are designed as autonomous elements which appear to slide over each other, with their cantilevering providing covering for sections of the playground. Each volume is in a different color or material. The bays have been designed according to their orientation and the level of light required. Transit routes receive natural lighting from the patios and tall openings. The first-floor classrooms can be accessed directly from the playground, without having to pass through the rest of the building. The classrooms are open at either end, and hence face both north and south. This produces ideal lighting conditions, as well as natural cooling by the passage of air through the classrooms from one end to the other.

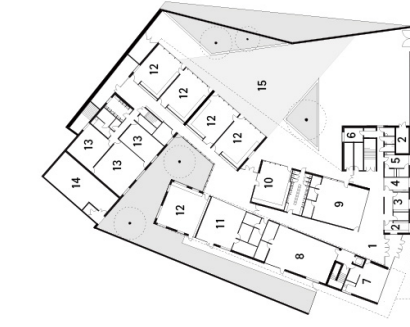
학교 측은 개방을 위한 동떨어진 한 부분으로 도시와 바다를 연결하고자 했다. 학교는 넓지 않은 삼각형 모양 대지에 자리 잡고 있으며, 시골은 주거 지역의 밀도를 높일 수 있는 도시계획에 따라 완성됐다. 1층은 유치원으로 구성했고, 중상부에는 학교 밥과 전 및 밥과 후 활동을 위한 공간으로 마련됐다. 초등학교는 두 층에 걸쳐 배치했으며, 유치원 위에는 아이들을 위한 놀이터가 구축됐다. 전체 공간의 경우 서로 자유로이 고저할 수 있도록 설계했으며, 캔틸레버는 놀이터를 위한 공간으로 꾸며졌다. 각각의 공간도 각기 다른 색상 혹은 재료로 마감했고, 특별 구역은 이들의 방향 및 요구되는 빛의 세기에 따라 디자인됐다. 층계 승로는 파티오와 높은 곳의 연한 공간을 통해 자연당이 유도되며, 1층에 있는 교실은 교실은 다른 자연을 거치지 않고 놀이터 바로 출입할 수 있다. 이는 북쪽으로는 개방된 구조의 교실은 북쪽과 남쪽 모두를 향해 있으며, 이는 이상적인 해당 조건을 구현하며 교실 한쪽 끝에서 다른 쪽까지 공기 유통에 따라 자연적인 통풍이 가능하다.



- 1. Entrance Hall
- 2. Permanent Office
- 3. Director's Office
- 4. Front Desk Reception
- 5. Staff Room
- 6. Psychologist's Office
- 7. Meeting Room
- 8. Activity Room

- 9. Extracurricular Activities Room
- 10. Multimedia Classroom
- 11. Nursery Hall
- 12. Classroom
- 13. Sleeping Room
- 14. Ventilation & Heating Room
- 15. Nursery Courtyard
- 16. Elementary Classroom

- 17. Kitchen
- 18. Staff Dressroom
- 19. Nursery Dining Room
- 20. Elementary Dining Room
- 21. Waste Room
- 22. Sports Court
- 23. Elementary Upper Schoolyard



Ground floor Plan



1st Floor Plan

