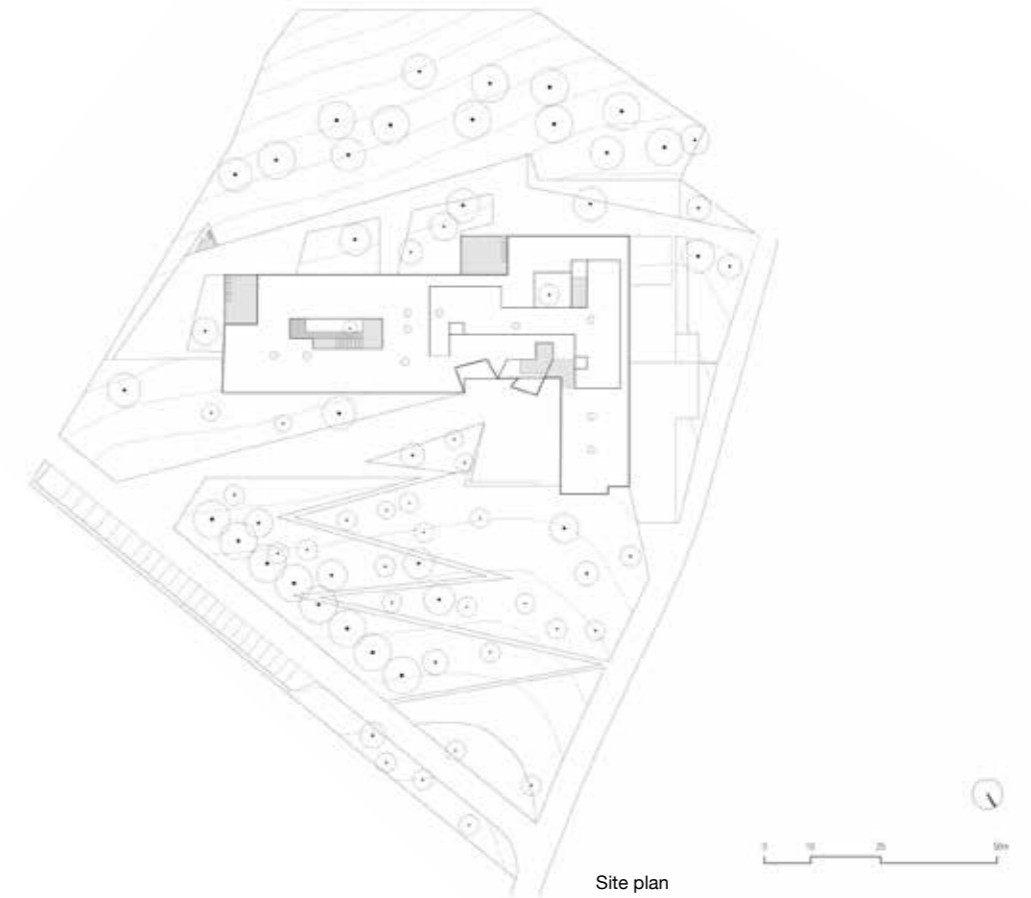




NURSING HOME IN PONT-SUR-YONNE

HOW TO PRODUCE A LIVING SPACE THAT HIGHLY RESPECTS
THE DIGNITY OF THE RESIDENTS

Program: Nursing home for dependent elderly people
Location: Pont-sur-Yonne, France Design: Dominique Coulon &
associés Photos: David Romero-Uzeda Developer: Lamy-Deleltre
Nursing Home Plot area: 9,950m² Building area: 5,395m²
Cost: 9,304,560 Euros



Project Background

The building blends into the sloping landscape of Pont-sur-Yonne. The dark blocks house the 96 rooms; the main entrance is arranged around a courtyard resembling a village square, facing the Yonne valley.

Design Strategy

Two points are highlighted:

1. The building is certified to high energy performance standards. The exterior insulation confers good inertia and provides a high level of thermal comfort.

2. In drawing up this project, particular care has been paid to use and functionality. Everything has been done to use routes, natural light and materials to best advantage, producing living spaces which respect the dignity of their residents.



The dark volumes appear hollowed out, with a tumble of geometric shapes folded into these starkly white hollows. There are views of the scenery on all sides; the terraces look towards the river.

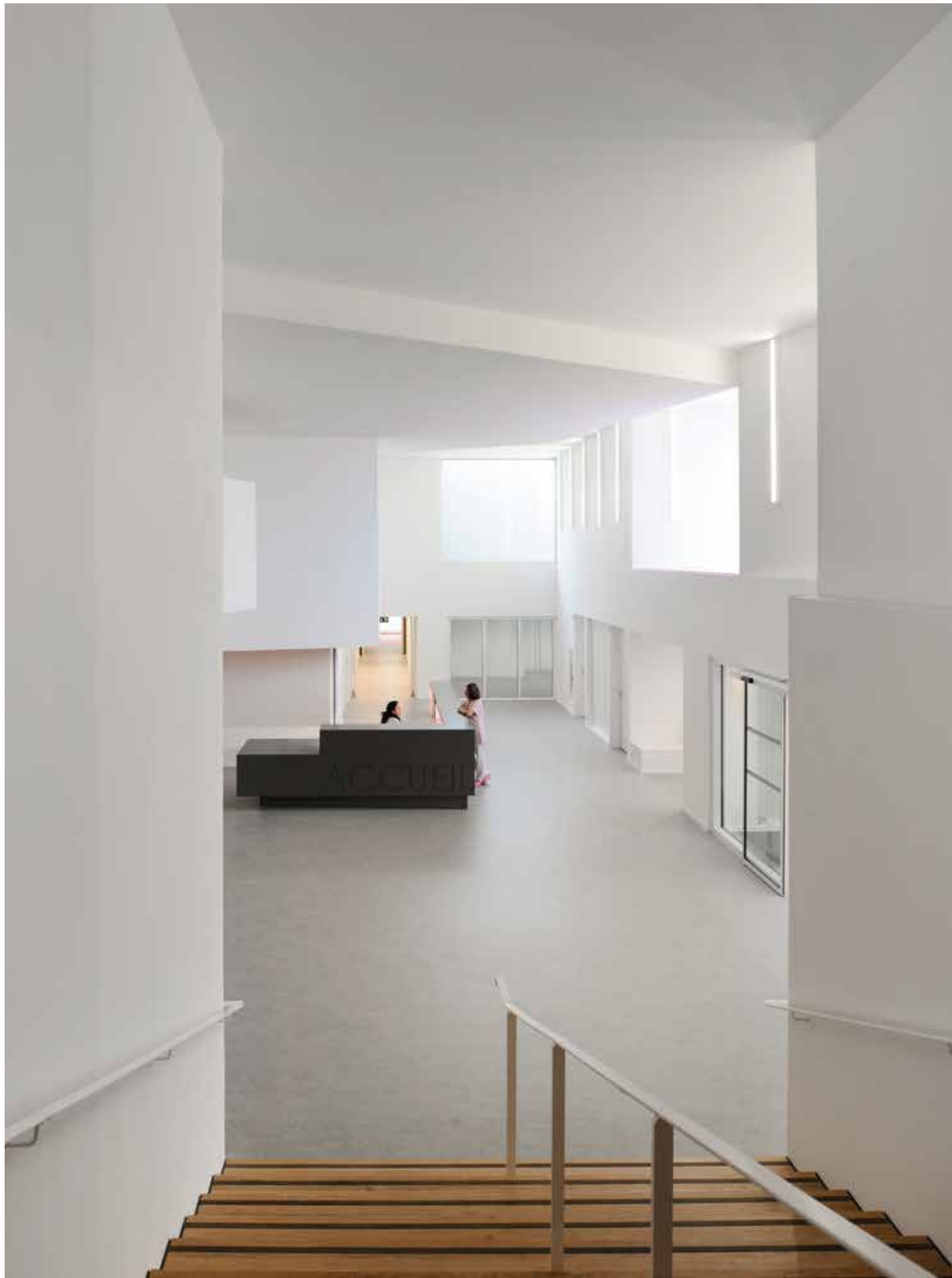
The common areas of the living spaces are arranged to benefit from the energy of light from the south, with wide openings looking out over the park.



Two planted patios provide the building with depth.

All traffic routes have natural light, making them ideal for strolling. They widen with changes of direction, accommodating sitting areas in warm shades of pink and red where ergonomically designed banquettes are conducive to group conversations among the residents.

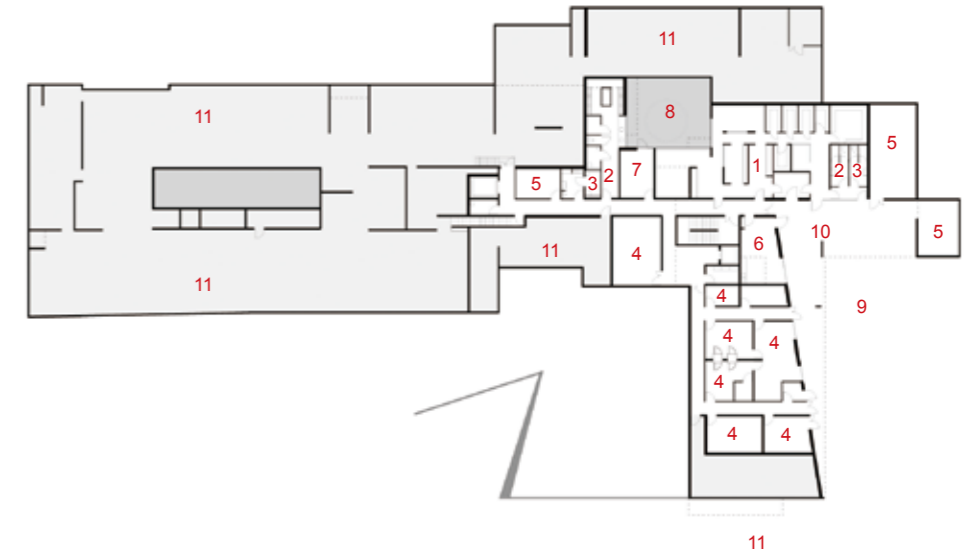






Basement floor plan

- 1. Kitchen and food storage
- 2. Staff dressing room—women
- 3. Staff dressing room—men
- 4. Maintenance and waste rooms
- 5. Technical rooms
- 6. Multipurpose room
- 7. Union room
- 8. Courtyard
- 9. Deliveries area
- 10. Loading area
- 11. Crawl space

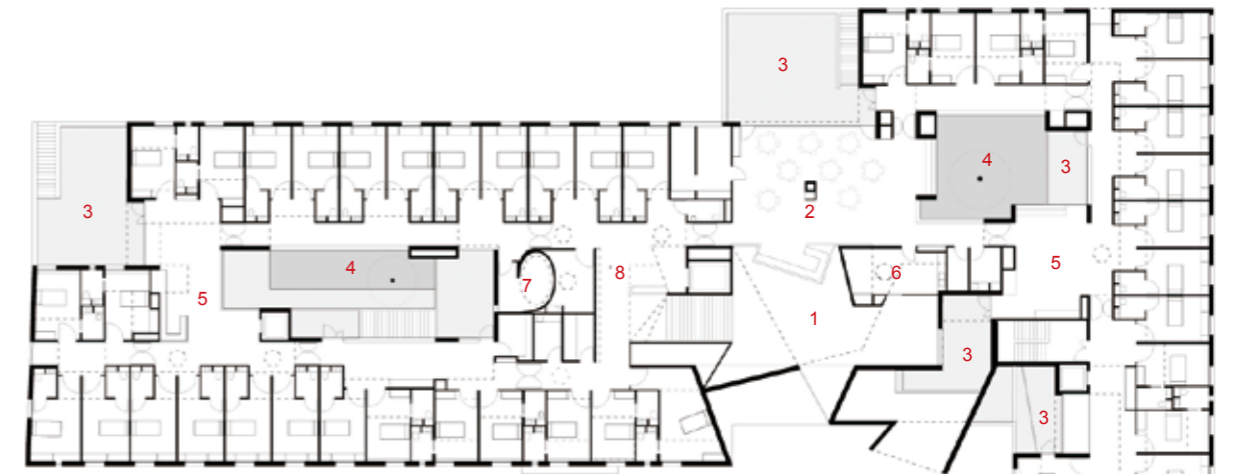


Particular attention has been paid to making the collective areas both fluid and transparent. The dining rooms occupy a central balcony position looking towards the lobby, opening broadly to the south. Sheltered terraces are a further addition to the residents' quality of life.

Ground floor plan

- 1. Hall
- 2. Dining room
- 3. Multipurpose room
- 4. Secretary room
- 5. Administration room
- 6. Meeting room
- 7. Nursing room
- 8. Medical consultancy
- 9. Nursing station
- 10. Pharmacy
- 11. Washing
- 12. Office
- 13. Open living room
- 14. Hairdressing
- 15. Dining room/living room
- 16. Therapeutic kitchen
- 17. Courtyard
- 18. Opening over the courtyard





First floor plan

1. Opening over the hall
2. Dining room
3. Terrace
4. Opening over the courtyard
5. Open living room
6. Nursing station
7. Relaxing space
8. Hall

The rooms, each measuring 20 square meters, have been very carefully designed. The combination of bay windows and furnishings reinforces the feeling of thickness of the façade. The diversity of the three types of room is enhanced by the careful attention paid to both color and solar orientation.