

# I-PLUS

Interiors + Detail

**Body Building**

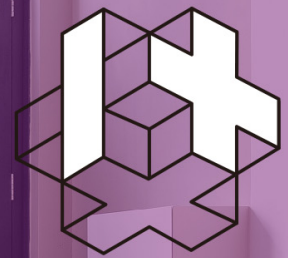
**Playground as an Office**

**Multipurpose Sneakers Showroom**

**Neumatt Sports Centre**

**Distrito Fijo**

**Factory Five**



**I-PLUS**  
Interiors + Detail

**SPORTS SPACE**

**Hankook Delcam**

**Eating Tools**

**SILKY NAVY SKIN**



**No. 007**

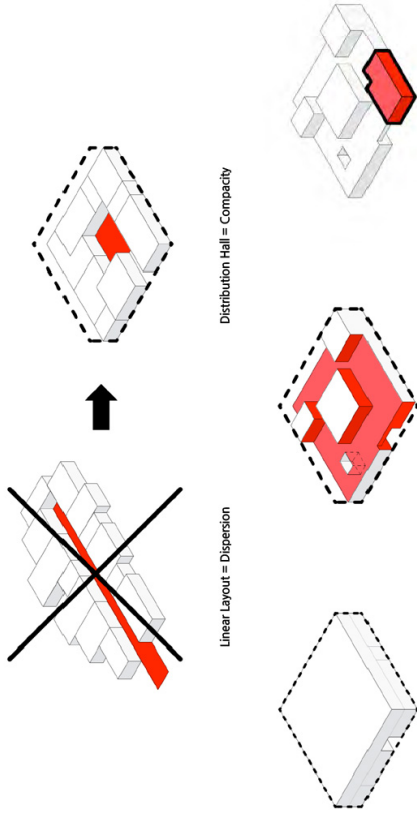


PROJECT

# NURSERY IN BUHL, FRANCE

*Dominique Coulon & associés*

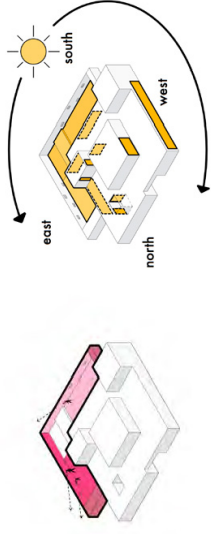
Dominique Coulon is born in 1961. In 1989 he is graduate with the professor and architect Henri Ciriani and he created his own studio. In 1990, he receives a special prize for the international competition of The Japan Culture House in Paris. In 1991, He is the winner of «la Villa Médicis hors les murs» and travels in USA, South America and Europe. In 1996, he receives the «1ère œuvre» prize for the college Pasteur in Strasbourg. He is several time nominated Mies van der Rohe Award in regards to its Centre at the prize list of the «Equerre d'Argent» in 1999, 2002 and 2006 and receives in 2006 the prize of sustainable development, respect for historical context and responsibility towards the environment and its ecologies are amongst the main concerns for the agency. Since 2008 the agency becomes 'Dominique Coulon et associés' with Olivier Nicollas and Steve Letho Duclos as partners, Benjamin Rocchi and Steve Letho Duclos as partners, Benjamin Rocchi became partner in 2014.



The Volume

Nursery Assistants Room  
Autonomy

Nursery Assistants Room  
Autonomy



Protected Outdoor Spaces

Sunny Living Spaces

Location Buhl, France

Area 763m<sup>2</sup>

Design Dominique Coulon & associés

Designer Dominique Coulon, David Romero-Uzeda, Olivier Nicollas

Architectes Assistants - Javier Gigoso Ruizpérez, Diego Bastos-Romero, Gauthier Duthoit

Construction Site Supervision David Romero-Uzeda

Client CC Région de Guebwiller

Photographer Eugeni Pons, David Romero-Uzeda

The building marks the entrance to a small village nestling in a valley in Alsace. A 14th-century castle dominates the site from the nearby hillside. The day nursery echoes the orthormal geometry of the fortified castle. A perimeter wall with openings like on a castle wall protects the children's playgrounds. This spatial arrangement offers views of the rounded outlines of the Vosges mountains. The principle of the strictly rectangular plan is an arrangement of successive crowns containing the elements of the project. These layers give depth to the project overall. The heart of the building is formed by a central space which emerges at double the height and plays with natural light like

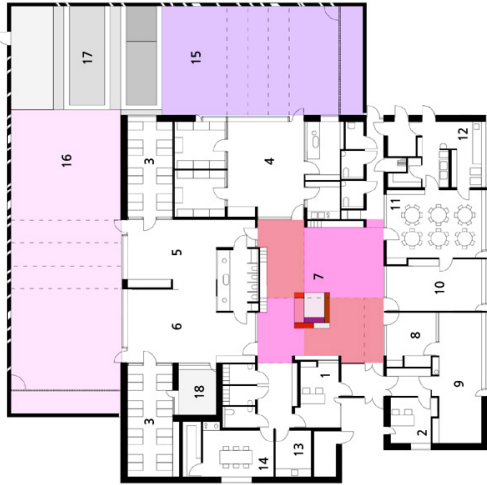
a kaleidoscope. This almost cubic volume condenses a host of faces ranging in colour from pink to red. The matte and shiny colours resonate, shaping the space to make it richer and more subtle. The multiple transparencies installed between the different layers give an indication of the depth of the building. There is abundant natural light throughout, captured by skylights emerging from the overall volume. The building appears in the landscape like a fragmented monolith where the play of solids and hollows is reminiscent of something like a Lego model of a castle. The building is surrounded by six-foot apple trees which hark back to the local agricultural landscape.





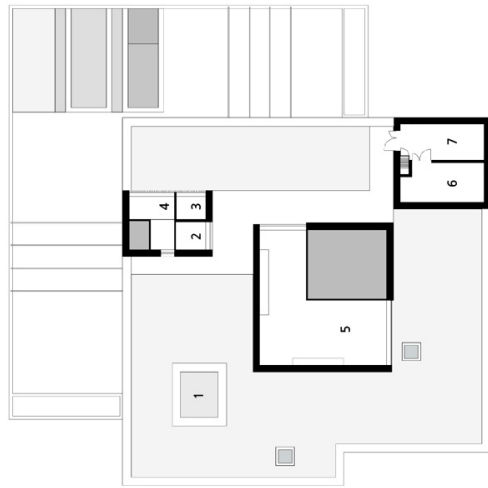


Ground Floor Plan



1. Nursery Direction
2. Nursery Assistants Direction Room
3. Sleeping Room
4. Babies Area
5. Toddlers Area
6. Pre-School Area
7. Hall
8. Expression Room
9. Meeting Room
10. Psychomotricity Room
11. Dining And Activities Room
12. Kitchen
13. Laundry Room
14. Meeting And Recreation Room
15. Babies Playground
16. Toddlers/Pre-School Playground
17. Vegetable Garden
18. Patio

1st Floor Plan



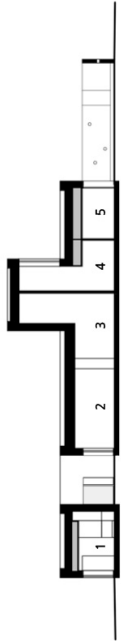
1. Void Over Patio
2. Void Over Activities Room
3. Void Over Babies' Sleeping Room
4. Void Over Sleeping Room
5. Void Over Hall
6. Ventilation Room
7. Heating Room





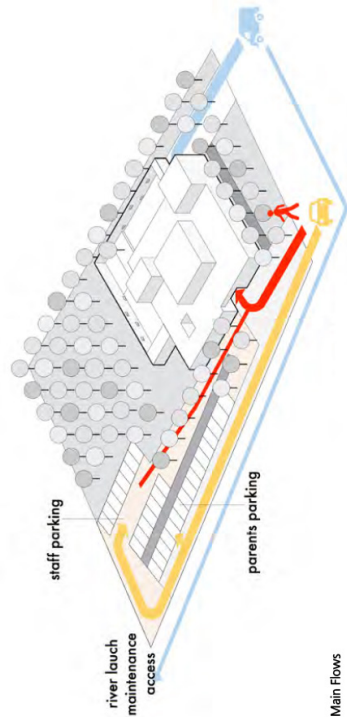
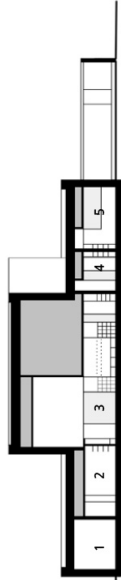
Section

1. Recreation Room
2. Patio
3. Pre-Scholar's Activities Room
4. Toddlers Activities Room
5. Sleeping Room



Section

1. Laundry Room
2. Nursery Direction Room
3. Hall
4. Feeding Bottle Room
5. Changing Room



Main Flows