

MARU

Interiors & Houses, Lifestyle Design

FOCUS

A Family House in Posázaví_A69 architekti s.r.o.

Space for Children

Sannaedeul Children's Center, Jongno Children's Theater, TN Nursery,
André Malraux's Group of Schools in Montpellier, Šmartno Timeshare Kindergarten

DESIGNERS

LEEKAJA Hairbis, Timing Home
Be Kids for One Moment, Innocean Headquarters Europe

HOME & HOUSES

No.9 Art Factory, SOLENEW PARK 2016
RT House

174



André Malraux's Group of Schools in Montpellier

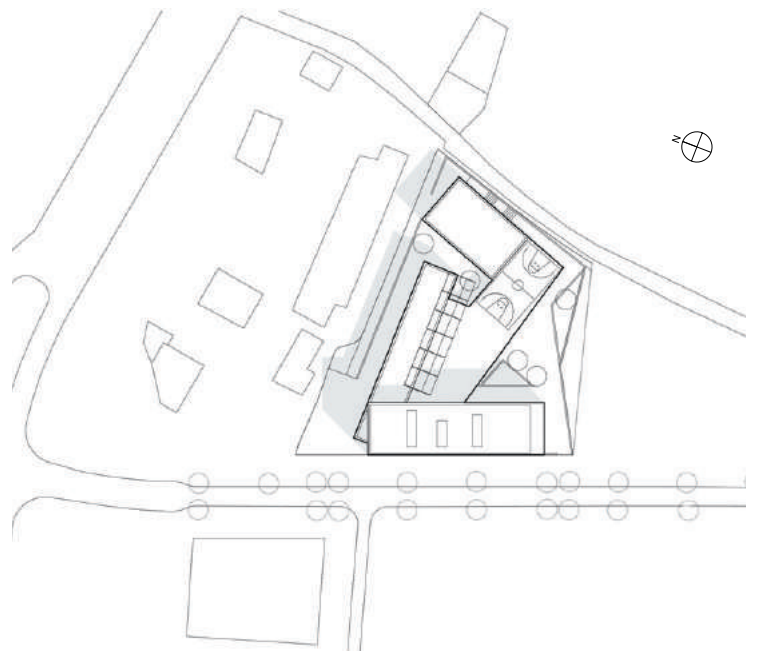
Dominique Coulon & associés





디자인 도미니크 콜론 어쏘시에스 **디자인 팀** 도미니크 콜론, 스티브 레도 뒤클로 **위치** 프랑스 몽펠리에 34 000 조안 미로 89번가 **용도** 학교 **면적** 3,444m² **사진** 유제니 폰즈

Design Dominique Coulon & associés **Design Team** Dominique Coulon, Steve Letho Duclos
Location 89 Avenue Joan Miro 34 000 Montpellier, France **Use** School **Area** 3,444m² **Photo** Eugeni Pons



Site Plan



앙드레 말로 재단 몽펠리에 학교

본 학교 건물은 몽펠리에 개발 계획의 일부로, 도시를 바다와 연결하고자 하는 목표를 가지고 있다. 학교 건물은 삼각형의 작은 부지에 있으며, 이는 새로 지정된 주거 구역의 밀도를 높이기 위한 목적으로 설계되었다.

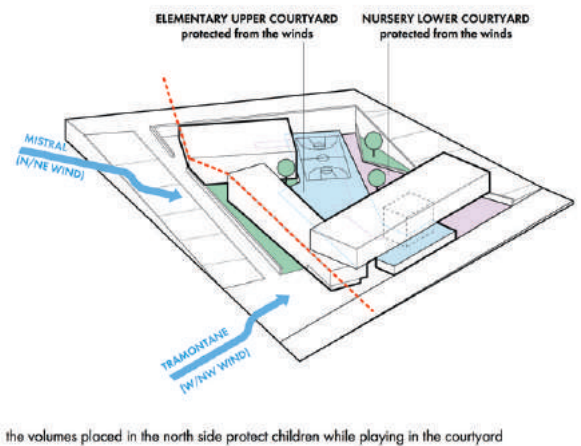
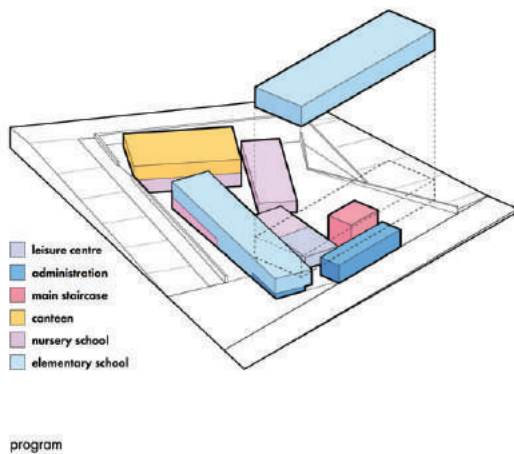
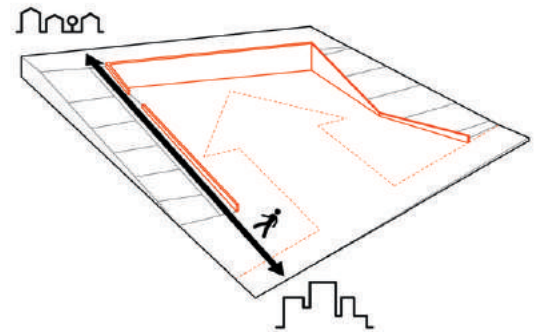
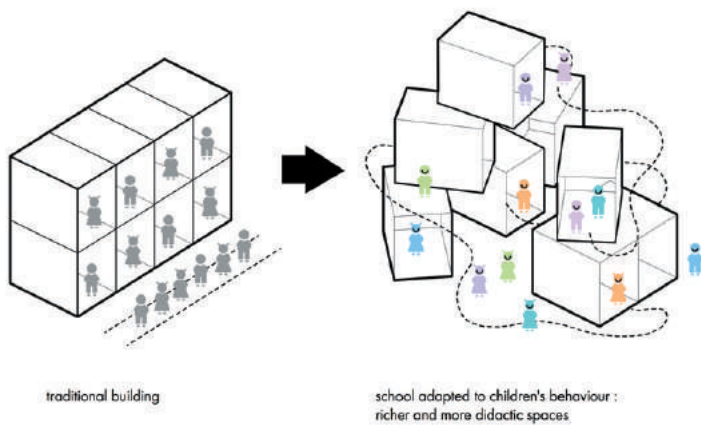
1층은 보육원과 등교 전, 방과 후 활동을 위해 설계되었다. 초등학교는 위 두 개 층을 차지하며, 운동장은 1층 지붕에 설치되어 있다. 매스는 서로의 위에 쌓여 있는 듯한 모습으로 배치되었으며, 상층부 매스의 외팔보가 운동장 일부를 덮어 그늘을 제공한다. 각 매스는 다른 색 또는 재질을 사용하여 만들어졌고, 방향과 필요한 채광 수준을 고려하여 퇴장이 배치되었다. **M**

The school unit is part of Montpellier's dynamic for development, the aim being to connect the city with the sea. The school is set on a small triangular plot of land, in keeping with the urban policy for densifying a new residential area.

The ground floor is taken up by the nursery school and the centre for before- and after-school activities. The primary school occupies the other two floors, with its playground on top of the nursery school. The volumes are designed as autonomous elements which appear to slide over each other, with their cantilevering providing covering for sections of the playground. Each volume is in a different colour or material. The bays have been designed according to their orientation and the level of light required.

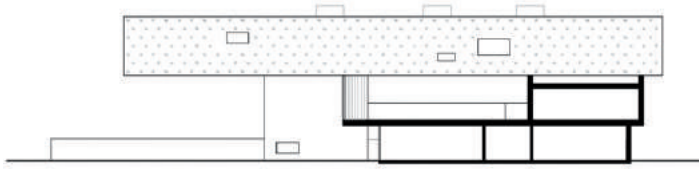
Transit routes receive natural lighting from the patios and tall openings. The first-floor classrooms can be accessed directly from the playground, without having to pass through the rest of the building.

The classrooms are open at either end, and hence face both north and south. This produces ideal lighting conditions, as well as natural cooling by the passage of air through the classrooms from one end to the other.

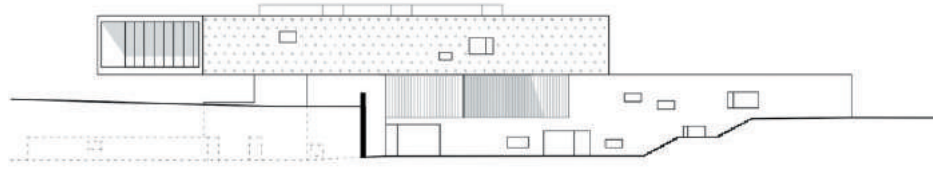


Diagram

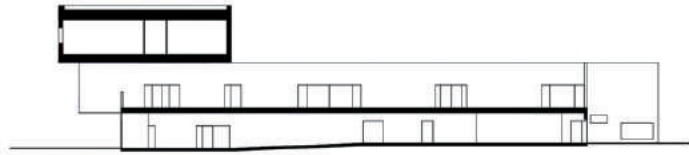




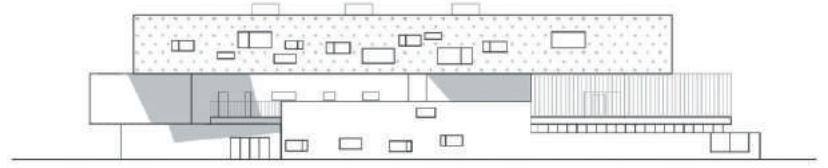
Section 1



East Elevation



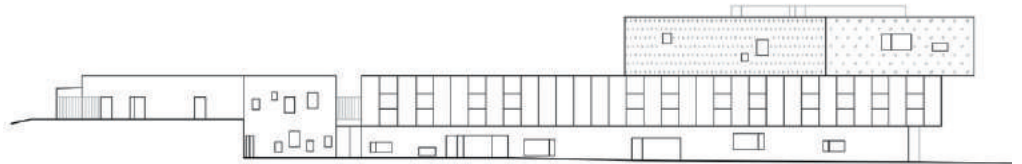
Section 2



West Elevation

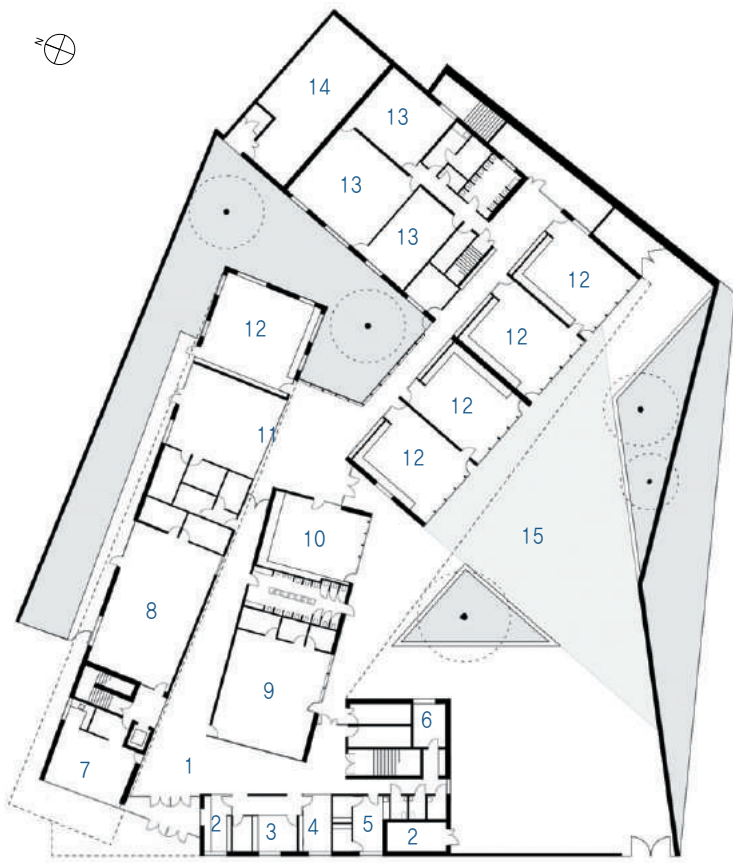


South Elevation



North Elevation





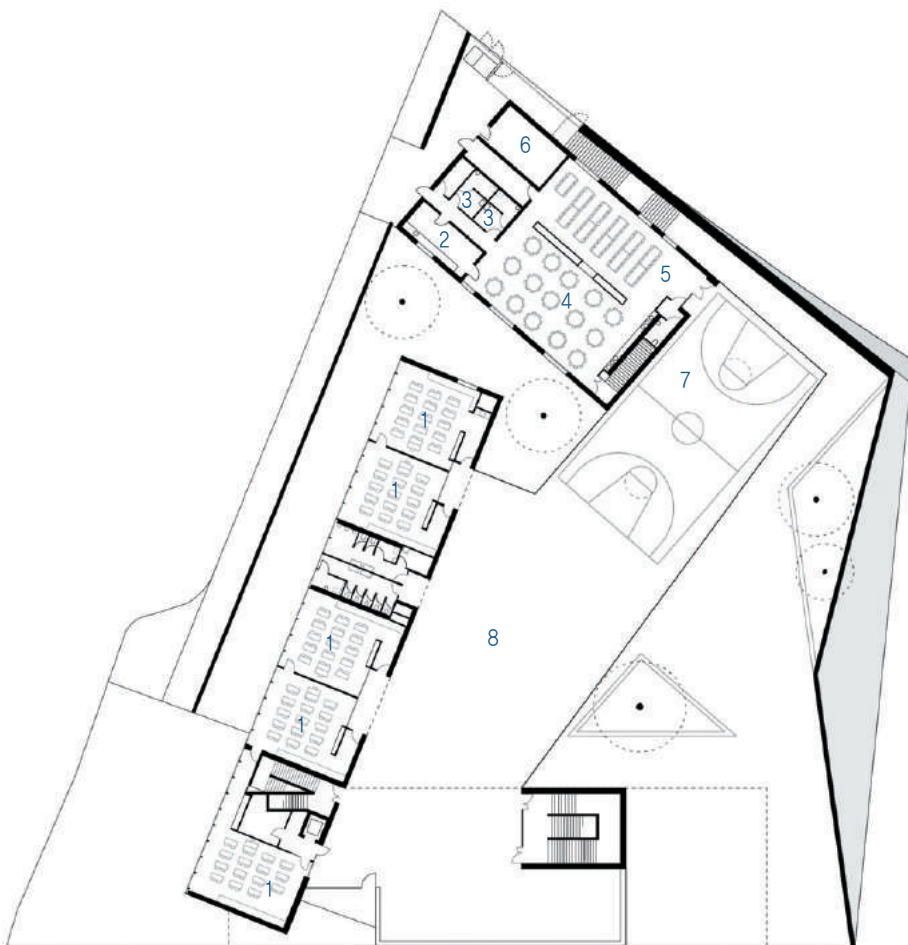
Ground Floor Plan









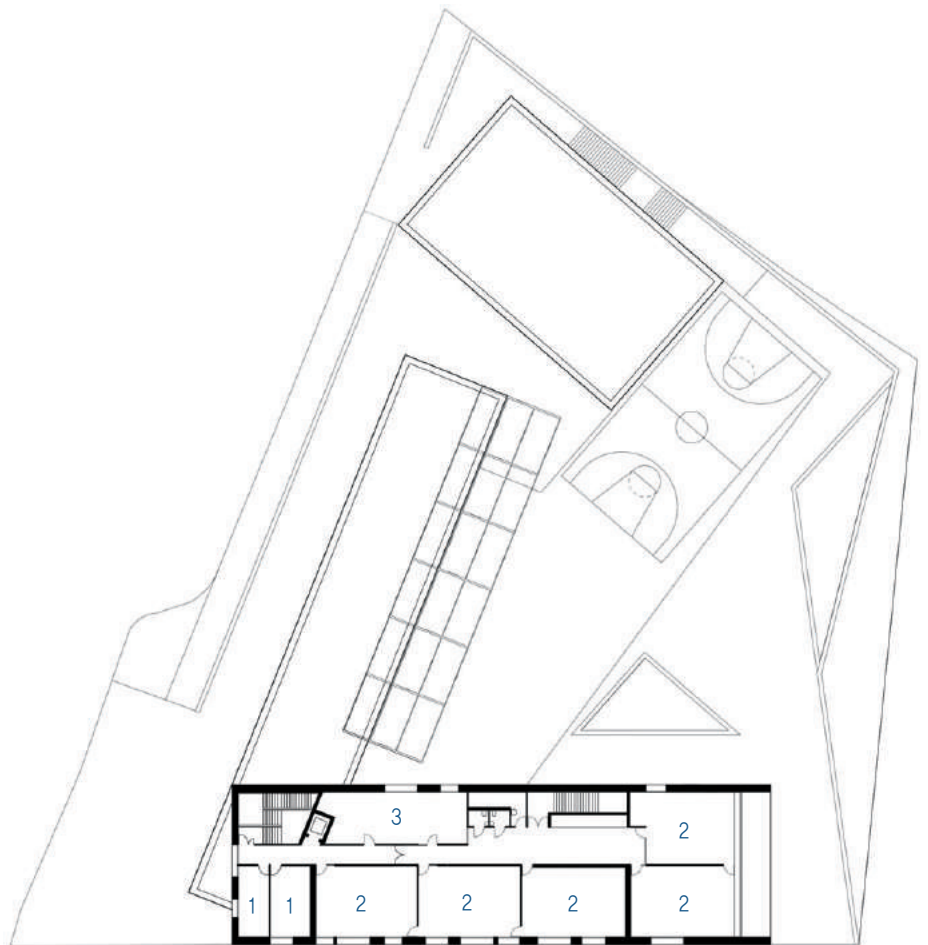


1. Elementary Classroom
2. Kitchen
3. Staff Dressroom
4. Nursery Dining Room
5. Elementary Dining Room
6. Waste Room
7. Sports Court
8. Elementary Upper Schoolyard

1st Floor Plan



- 1. Educational Practitioners Room
- 2. Elementary Classroom
- 3. Multimedia Classroom



2nd Floor Plan