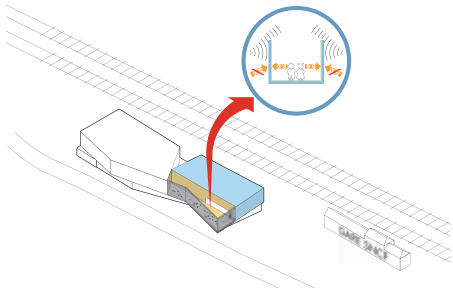


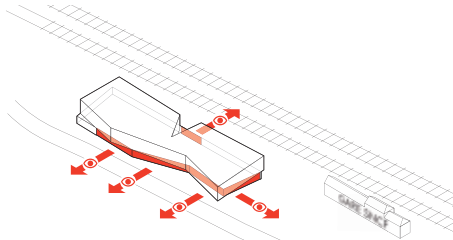
韦纳雷莱洛梅多功能建筑

Multi-functional Building in Venarey-Les Laumes

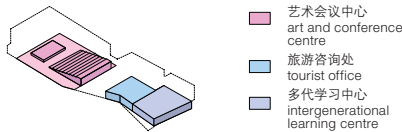
建筑师：Dominique Coulon & associés
 Dominique Coulon, Steve Letho Duclos, Architects
 项目团队：Guillaume Wittmann, Gautier Duthoit, Architects
 甲方：Ville de Venarey-Les Laumes
 地点：Avenue de la gare, 21150 Venarey-Les Laumes
 竣工时间：2015.3
 摄影师：David Romero-Uzeda



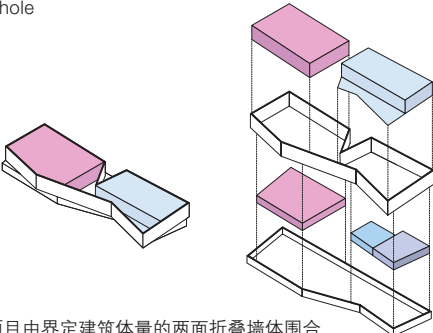
托儿所设在二层一个更加私密的受保护空间，像一个茧
 The day nursery is placed at the first floor in an intimate and protected space, like a "cocoon"



更加公共的空间尽量向前院开敞
 The more public spaces are widely opened to the forecourt



分别带有入口的不同部分既可以独立使用，也可以合在一起作为一个流畅的整体使用
 The different entities, with their own entries, can function independently or regrouped in a single fluid whole

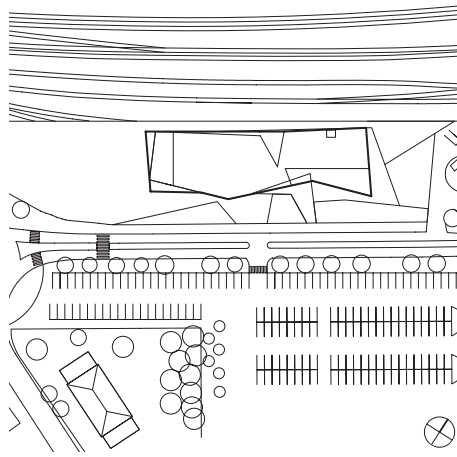


项目由界定建筑体量的两面折叠墙体围合
 The program is held by two folded walls that define the volume of the building

该项目位于法国勃艮第韦纳雷莱洛梅村，建筑毗邻铁路沿线，内部规划有旅游咨询处、会议和文化中心、日间托儿所、老年活动中心等多个区域，满足了当地居民的不同需要。设计任务是把这些功能不同的空间整合在一座单体建筑中。上方的体量看上去就好像悬浮在一个几近透明的基座上。建筑师还在悬臂结构中设计出多个折叠面，每个折叠面都会因建筑的朝向而捕捉到照射角度较低的阳光。上层结构的外立面采用了不透明材料，并开有少量孔洞。整个外立面被划分为多个三角形结构，

有些三角形结构是亮面的，有些是亚光的，从而使整体结构看上去好像被分解为多个部分。在一天中不同的时间，建筑物的外观看上去都略有不同。日间托儿所位于二层，其他的功能空间则位于一层。托儿所的外侧还建有一个庭院，庭院被涂成了明黄色，周边还设有围墙以保护儿童免受高速通过这里的货运列车和旅客列车的影响。建筑一层透明结构的设计还在建筑与附近铁路之间建立起一种互动的关系。该建筑在当地十分具有标志性，仿佛一座规模宏大的政治丰碑。
 闫文诗 译

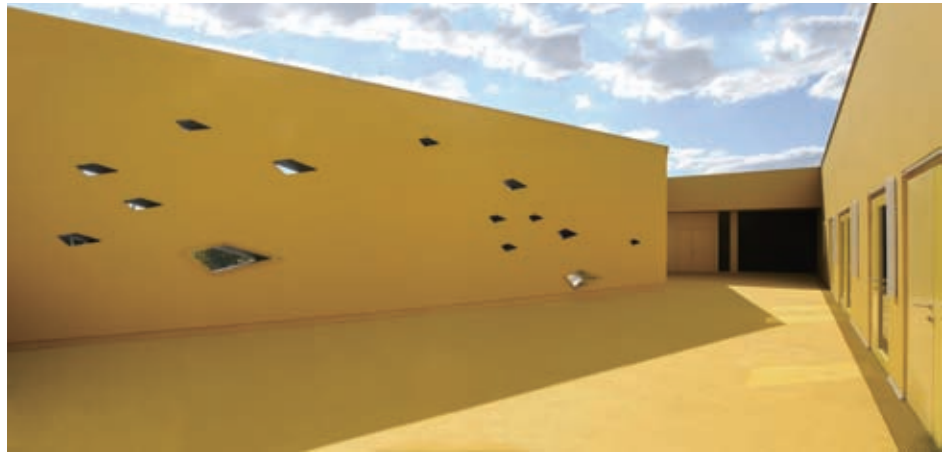




总平面图 比例 1:2500
Site plan scale 1:2500
楼层平面图·剖面图
比例 1:800

- 1 表演大厅
- 2 大堂
- 3 旅游咨询处
- 4 多代活动中心
- 5 厨房
- 6 艺术家更衣室
- 7 技术设备室
- 8 空气处理设备
- 9 表演大厅上空空间
- 10 大堂上空空间
- 11 托儿所助理室
- 12 天井
- 13 日间托儿所
- 14 露台

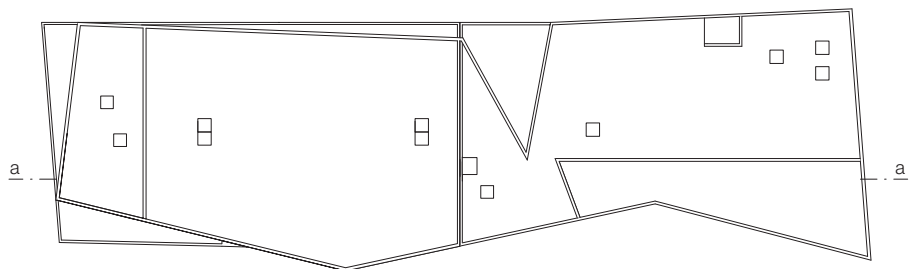




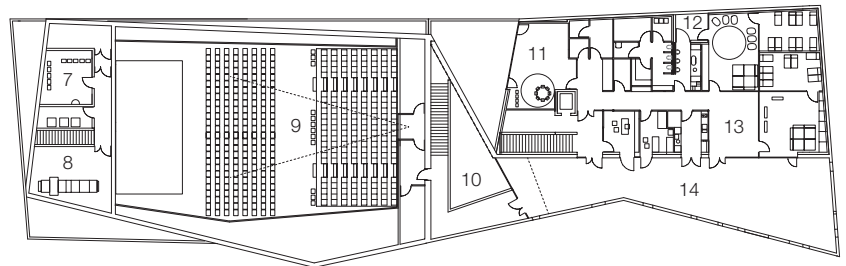
The project stretches alongside the railway line in the small village of Venarey-Les Laumes, in Burgundy. The building, designated a centre for rural excellence, contains a number of different initiatives, including a tourist office, a conference and culture hall, a day nursery, and areas for older people. The task was to bring all these very different initiatives together in a single dynamic unit. The upper volume seems to float above an almost transparent plinth. Cantilevers accentuate the dissociation of the various folds, each fold producing a face which captures the low-angled light produced by the orientation of the building. The lightly perforated opaque skin is divided into a number of triangles – some are matte while others are shiny – thereby breaking down the structure of the basic volumes. The building often has a different appearance at different times of day. The day nursery is located upstairs, while the other initiatives are on the ground floor. A bright yellow courtyard continues the line of the areas used by the nursery, the purpose being to shield them from the substantial nuisance caused by the goods trains and high-speed passenger trains which pass at speed here. The transparent features of the ground floor are arranged in such a way that the relationship with the railway line is constant, and perceived as a dynamic event. The volumes of the project express its strong identity in the landscape; it stands like a marker of ambitious political determination.

Floor plans · Section
scale 1:800

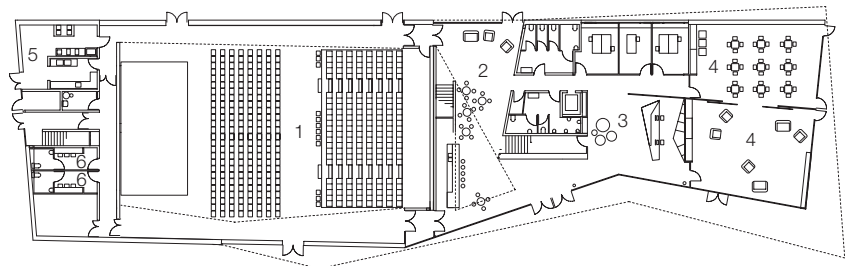
- 1 Performance hall
- 2 Lobby
- 3 Tourist office
- 4 Intergeneration activities areas
- 5 Kitchen
- 6 Artist dressing room
- 7 Technical room
- 8 Air handling unit
- 9 Opening over the performance hall
- 10 Opening over the lobby
- 11 Nursery assistants room
- 12 Patio
- 13 Day nursery
- 14 Terrace



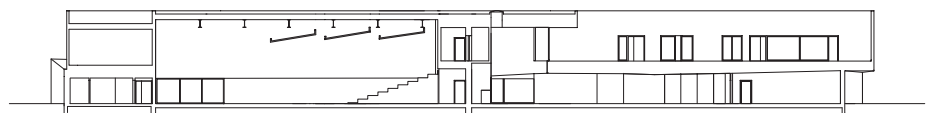
屋顶
Roof



二层
First floor



一层
Ground floor



aa