



Designed by
Dominique Coulon & associés

'Simone Veil' group of schools in Colombes
 France

The 'Simone Veil' group of schools forms a structural element in the urban composition of the new eco-neighbourhood. It is tightly embedded in the dense urban fabric, opposite a park and straddling the maintenance workshops for the new tram line.

The building is on three levels. The plot of land is small, and the roof areas are used to house the elementary school's classrooms and educational gardens. The group also includes a sports hall, a canteen, a library, and

out-of-school childcare facilities. The building is very thick; the hollows scooped out of the facades serve as facets, attracting the light and reflecting it back. Many of the traffic routes are lateralised, making them varied and bright. A number of patios irrigate the heart of the building, bringing natural light into its thickness. Internal transparencies add extra richness to traffic routes.

On the town side, the building offers a rustic texture. Strips of untreated wood (with the bark left on) emphasise the corresponding roughness. The ground floor has the advantage of transparency through the covered courtyard, offering a glimpse of the multi-coloured playground, which

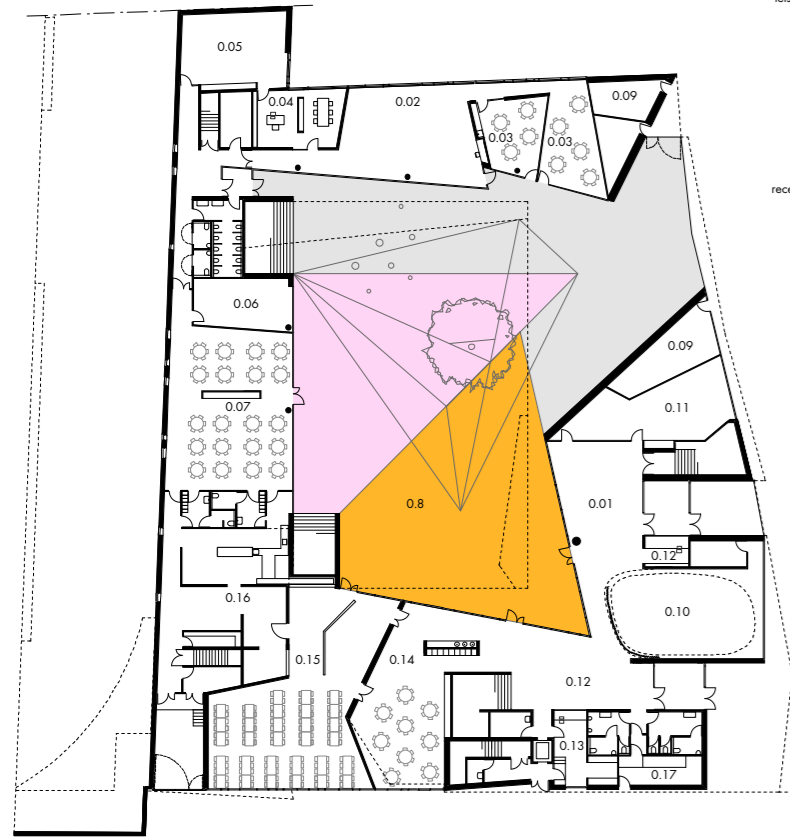
is intended to be a very autonomous and artificial universe. The bright colours transform the space, expanding it to create a place for educational stimulation.

This project avoids all form of repetition. The light, the materials used, and the traffic routes create micro-events. These fragments come together in a joyful chaos.

Photography: Eugeni Pons, Guillaume Wittmann, David Romero-Uzeda

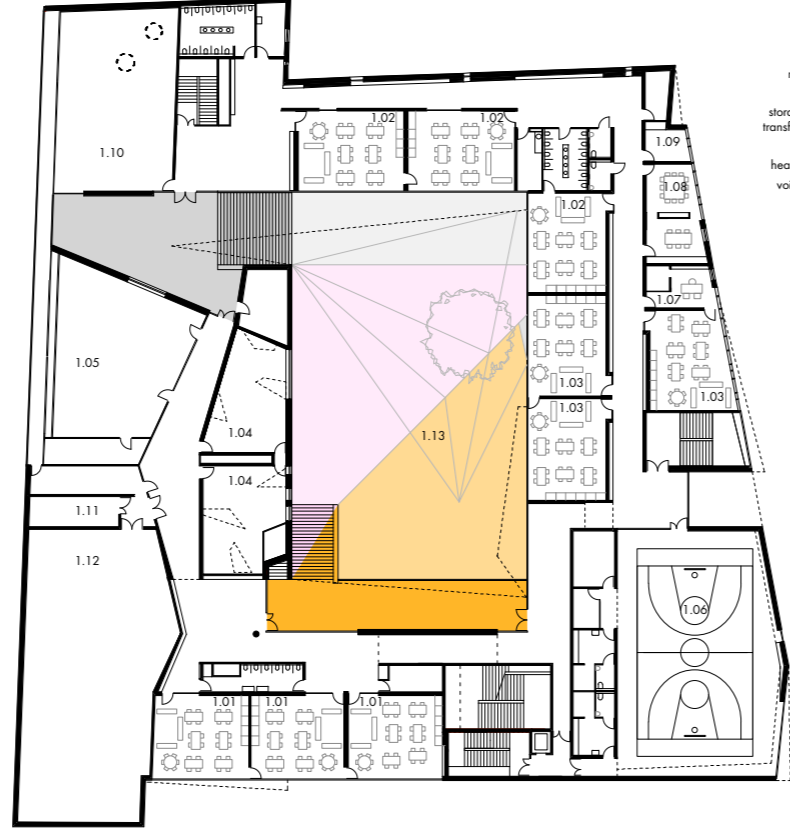
ground floor

- nursery hall 0.01
- leisure center hall 0.02
- workshop 0.03
- leisure center direction room 0.04
- sleeping room 0.05
- teachers' room 0.06
- nursery dining room 0.07
- nursery courtyard 0.08
- bicycle room 0.09
- motricity room 0.10
- nursery library 0.11
- elementary hall 0.12
- caretaker's lodge 0.13
- reception and common room 0.14
- elementary dining room 0.15
- kitchen 0.16
- waste room 0.17



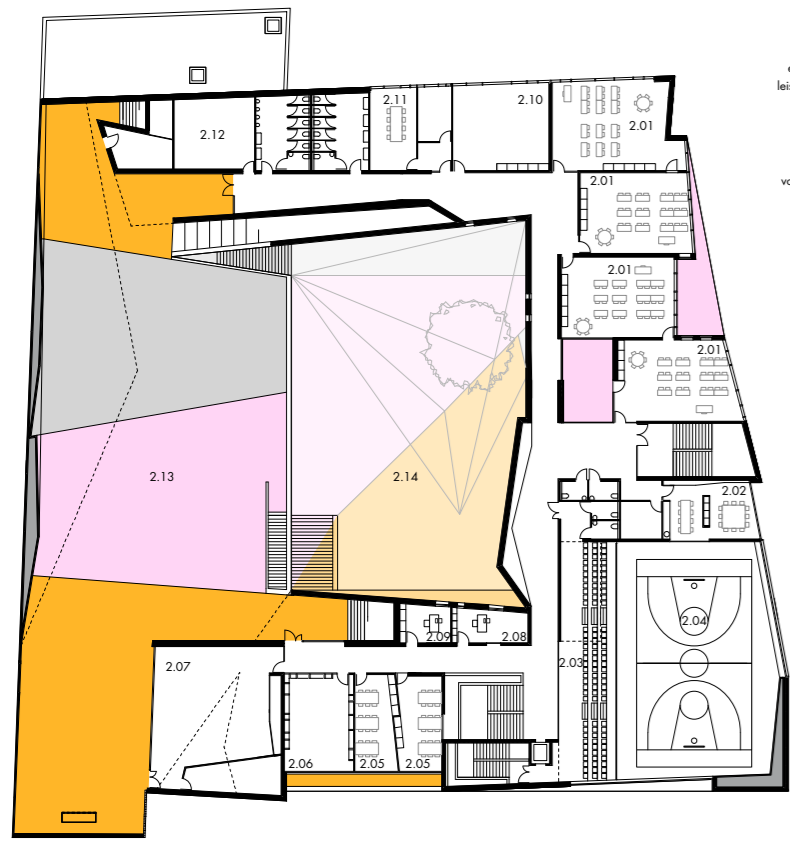
1st floor

- 3 years children's nursery classroom 1.01
- 4 years children's nursery classroom 1.02
- 5 years children's nursery classroom 1.03
- sleeping room 1.04
- physical education hall 1.05
- sports hall 1.06
- nursery direction room 1.07
- meeting + teachers' room 1.08
- recreation room 1.09
- storage room available to be transformed in two classrooms 1.10
- electricity room 1.11
- heating and ventilation room 1.12
- void over nursery courtyard 1.13



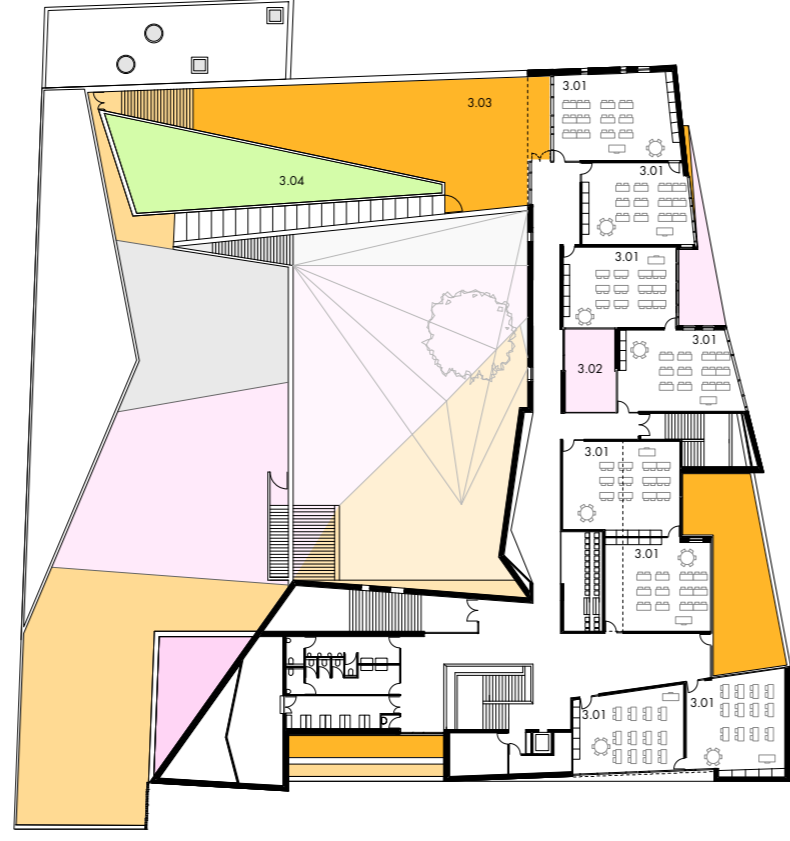
2nd floor

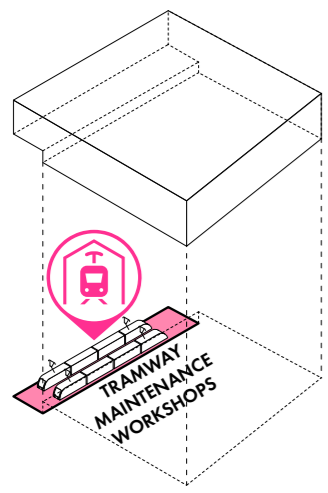
- elementary classroom 2.01
- meeting + teachers' room 2.02
- classroom 2.03
- void over sport hall 2.04
- workshop 2.05
- library 2.06
- multipurpose room 2.07
- elementary direction room 2.08
- leisure centre direction room 2.09
- support classroom 2.10
- teachers' room 2.11
- ventilation room 2.12
- elementary courtyard 2.13
- void over nursery courtyard 2.14



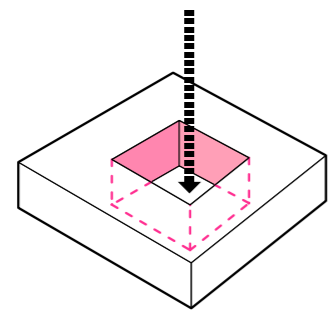
3rd floor

- elementary classroom 3.01
- patio 3.02
- accessible outdoor terrace 3.03
- roof learning garden 3.04

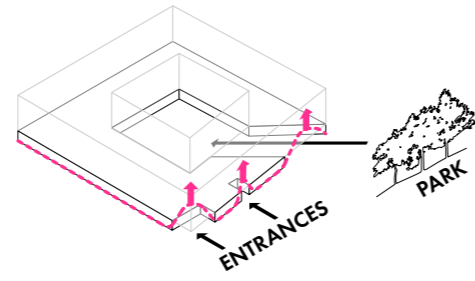




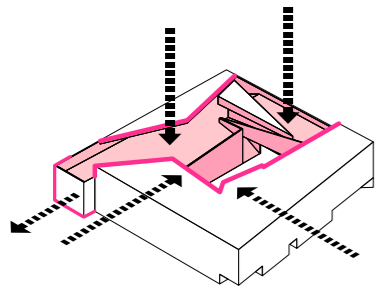
1. The building covers the tramway maintenance workshops.



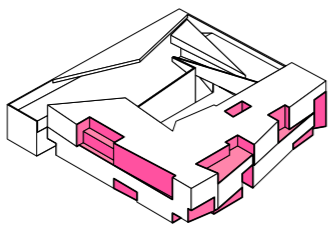
2. Compact volume / central void



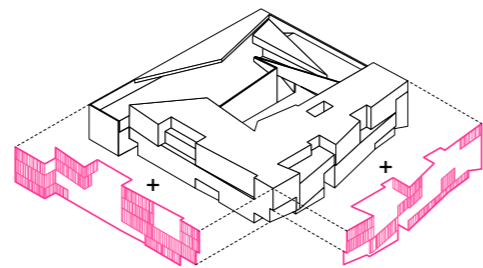
3. Porosity towards the town



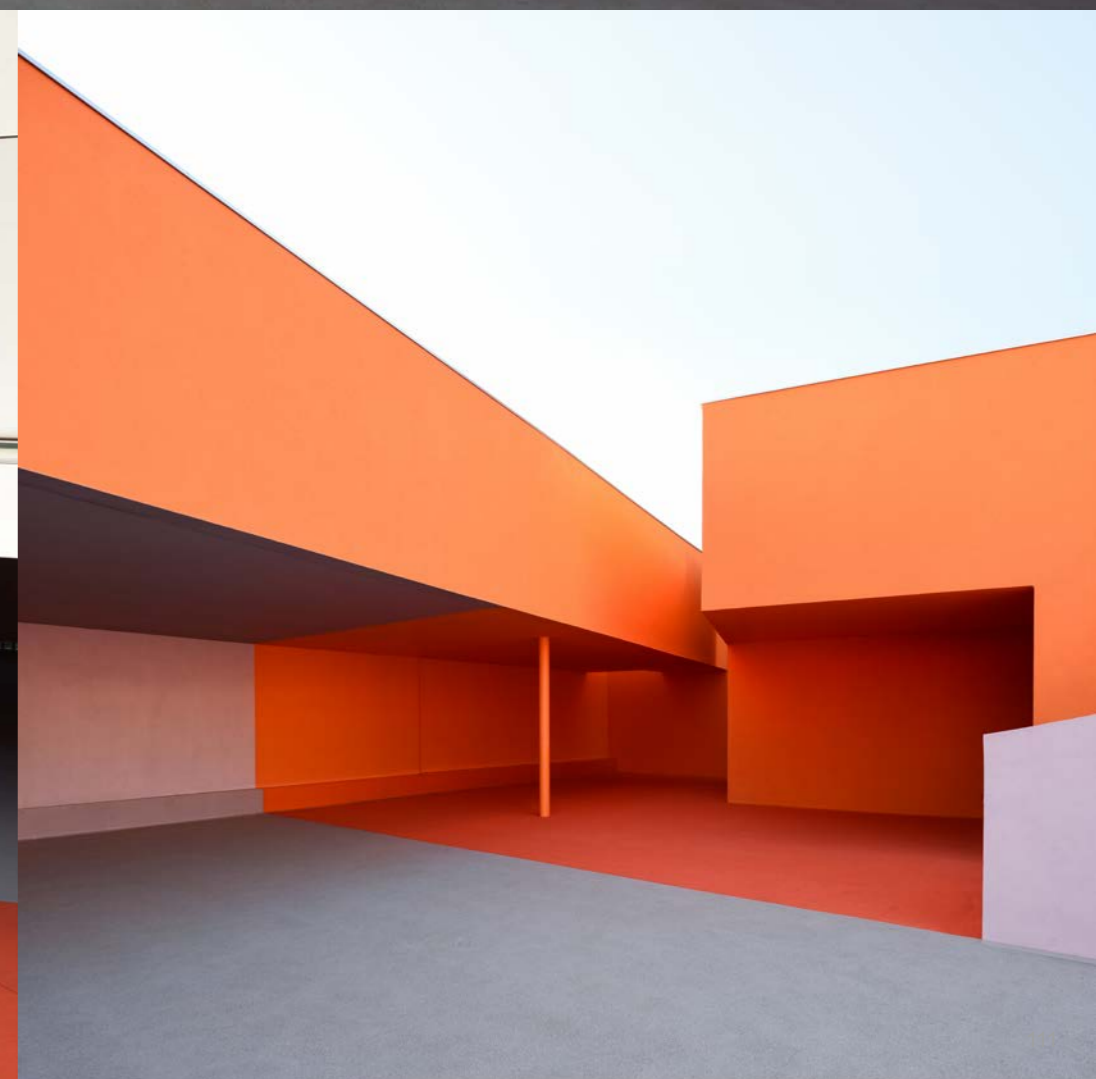
4. Geometrical deformations to create schoolyards

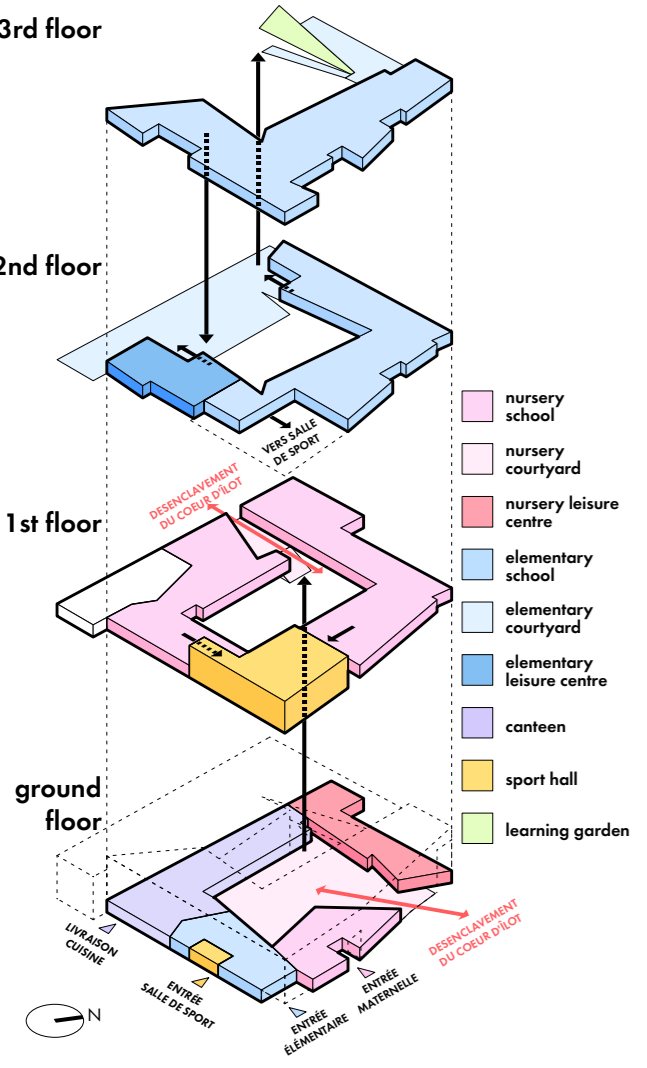


5. Coloured cavities as multiple facets capturing sunlight



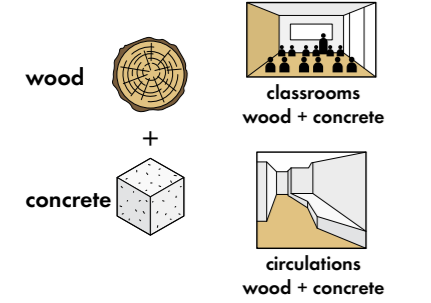
6. The rough wooden slats offer a rustic texture



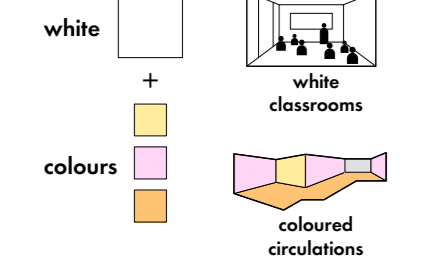


program

ELEMENTARY SCHOOL (6 - 11 years)



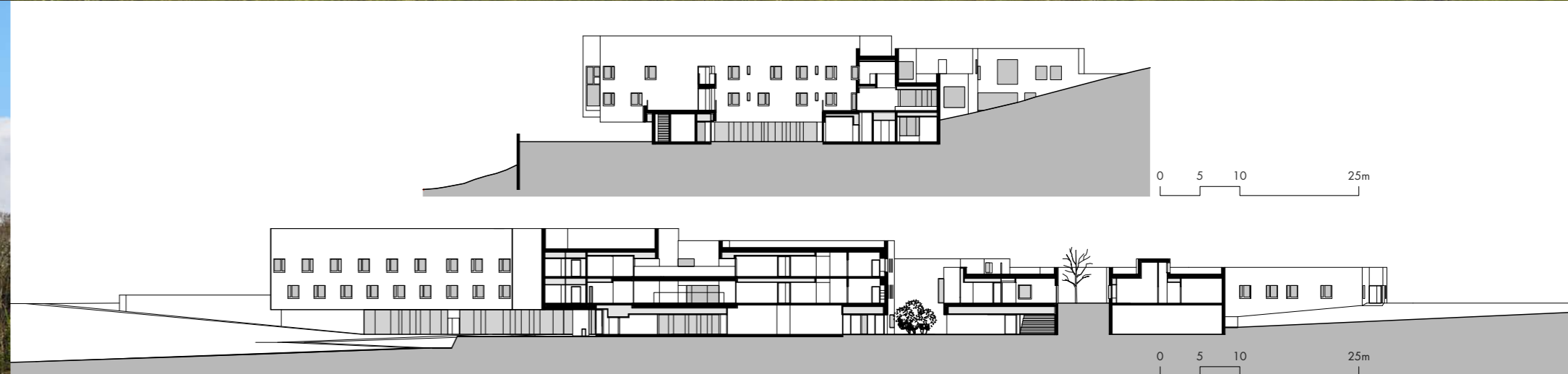
NURSERY SCHOOL (3 - years)



2 different universes







Designed by
Dominique Coulon & associés

Home for dependent elderly people and nursing home in Orbec
 France

This care and retirement home has been built in the heart of the Normandy bocage near the village of Orbec. The building follows the sloping curve of the hillside, and is visible from the valley.

To reduce the visual impact of this imposing building, we felt it preferable

to divide it up. We achieved the desired effect by using the colour green, with the result that the building both blends into the larger landscape and reflects the rural nature of the site. The under-faces of the overhangs and the white walls of the base produce a feeling of lightness.

Each of the living units fits into one section of the building, and all are connected to a south-facing street, backed by the hill. This arrangement gives views through the building from one side to the other, with light punctuating the traffic routes and achieving maximum variety. The colour

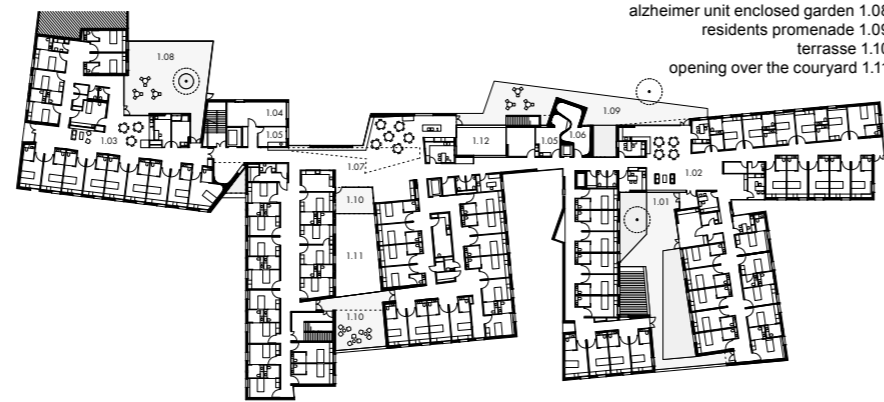
red deconstructs the space and adds dynamic. We have avoided using the conventional colours of the hospital environment.

The building has been designed to enhance the living and walking areas. Its strength lies in its relationship with the landscape.

Photography: Eugeni Pons

1st floor

- nursing home main entrance 1.01
- nursing home units 1.02
- alzheimer unit 1.03
- physiotherapy 1.04
- hairdressing 1.05
- snoezelen relaxing space 1.06
- lower interior street 1.07
- alzheimer unit enclosed garden 1.08
- residents promenade 1.09
- terrasse 1.10
- opening over the courtyard 1.11



2nd floor

- alzheimer unit 2.01
- upper interior street 2.02
- void over the 1st floor 2.03
- terrasse 2.04

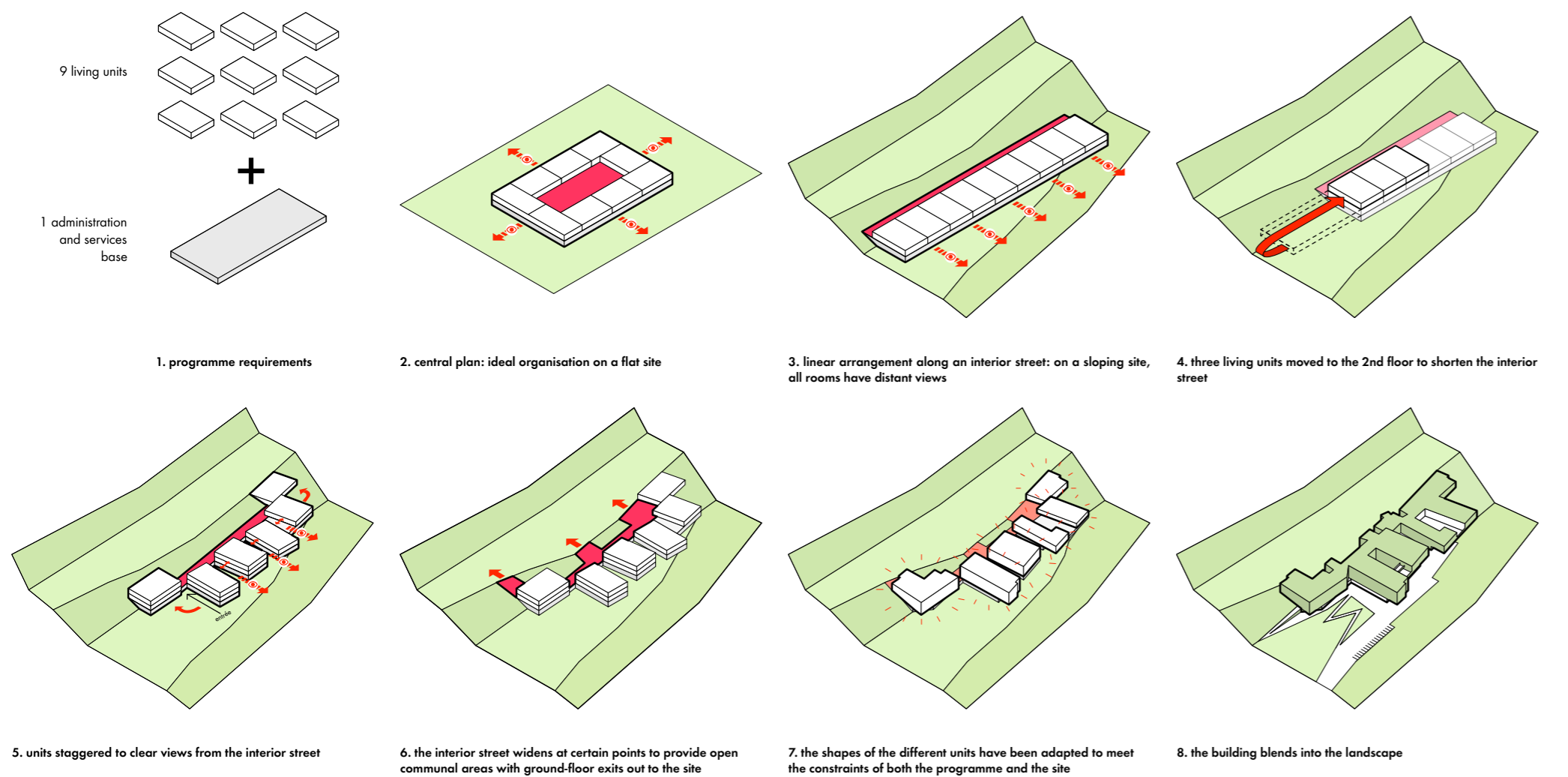


site plan

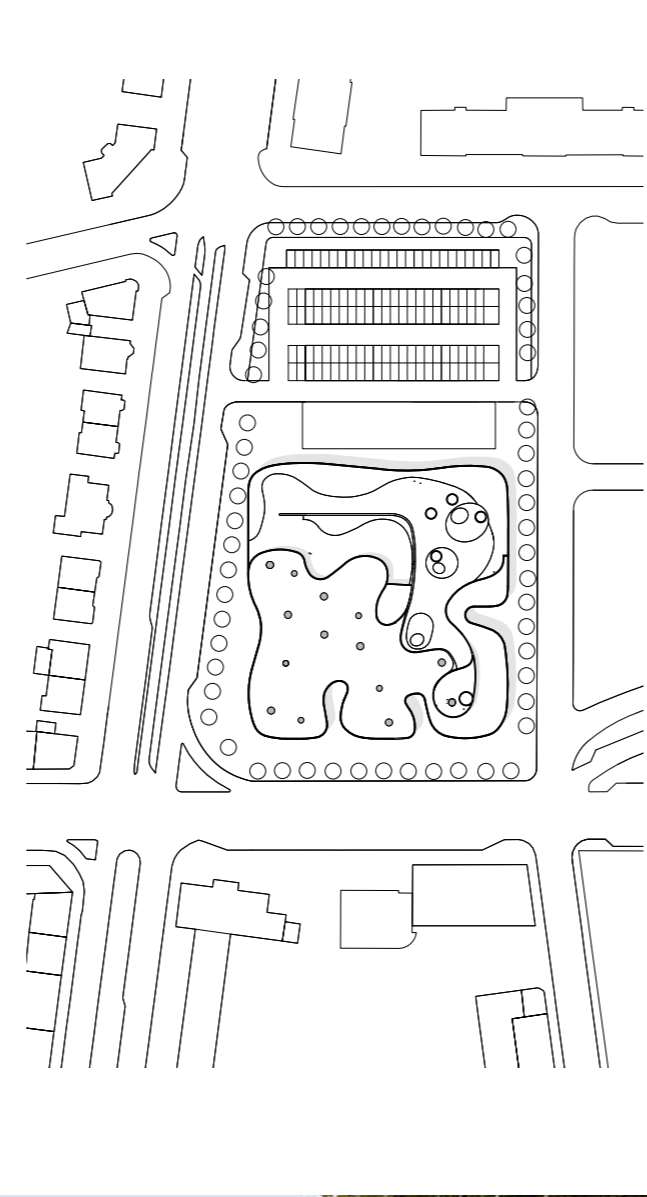
ground floor

- main reception lobby 0.01
- activity room 0.02
- workshop 0.03
- special treatment and activity unit 0.04
- snoezelen relaxing space 0.05
- nursing service 0.06
- administration 0.07
- kitchen 0.08
- pharmacy 0.09
- laundry 0.10
- nursing home lobby 0.11
- nursing home entrance 0.12
- technical rooms 0.13
- garden 0.14









Designed by
Dominique Coulon & associés

Media library [Third-Place] in Thionville
 France

This project has the ambition of becoming a new model for media libraries. The programme calls the functions of a media library into question, lending it the content of a “third place” – a place where members of the public become actors in their own condition, a place for creation as well as reception. In association with the basic programme, the building includes areas for displays, creation, music studios, and a café-restaurant. The various activities in the programme blend into each other, creating a dynamic arrangement. The building comes up close to the crown of plane trees – this is the first thickness to act as a filter from the street, apparently playing with this first colonnade of plant-life.

The facade serves as an unfurling ribbon that serves as a backdrop to the different universes contained in the programme. At its closest to the street, the ribbon dips, the better to contain it, rising again where it stands further back. In the hollows, the border between the interior space and the urban space is less clear and makes it possible to come closer, to embrace the building visually. The hollow and solid sections produce an ambiguity

between inside and outside, questioning the borders of the public space. Space becomes uncertain: it ceases to have clear outlines, and calls itself into question in practical terms.

Light spreads out along the ribbon, and the ribbon distributes the light to the area right in the heart of the building. A garden ramp offers another escape route to the outside, leading upwards to a summer bar, the culminating point of the architectural promenade. The garden extends the indoor walkway, getting closer to the line of the horizon; the town disappears, leaving just the crown of plane trees to dialogue with the sky. New uses become possible: people can take a nap, picnic, read outside, or gather in a group.

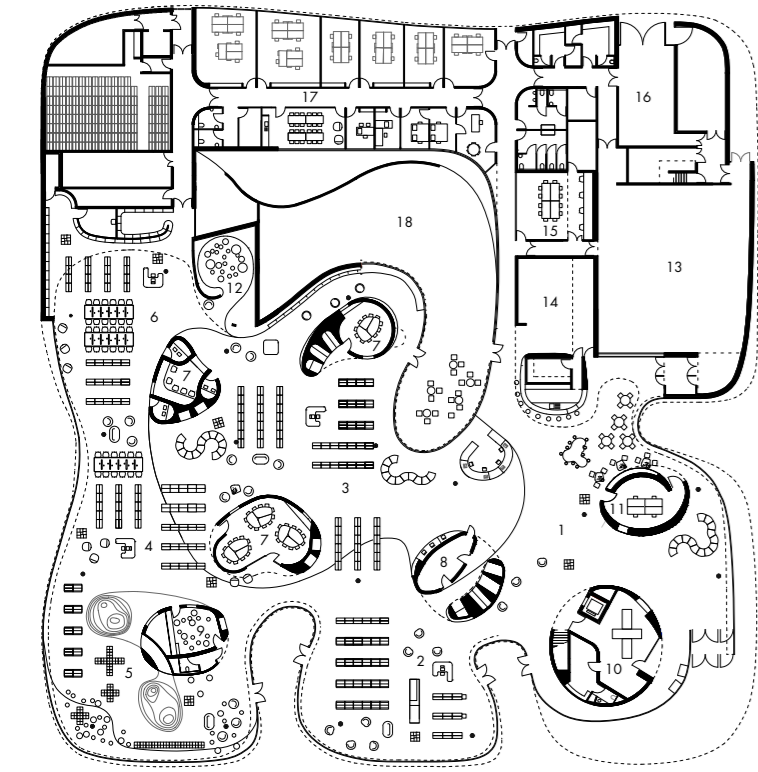
The building rests on a principle of independent, irregular systems. Stacking these simple systems, each with their own logic, creates tension in the space and in how it is read. In this way, the optical perceptive space eludes the Euclidean space and its preference for straight lines.

The bubbles contain very specific elements of the programme, such as a storytelling area, language laboratories, places for playing video games,

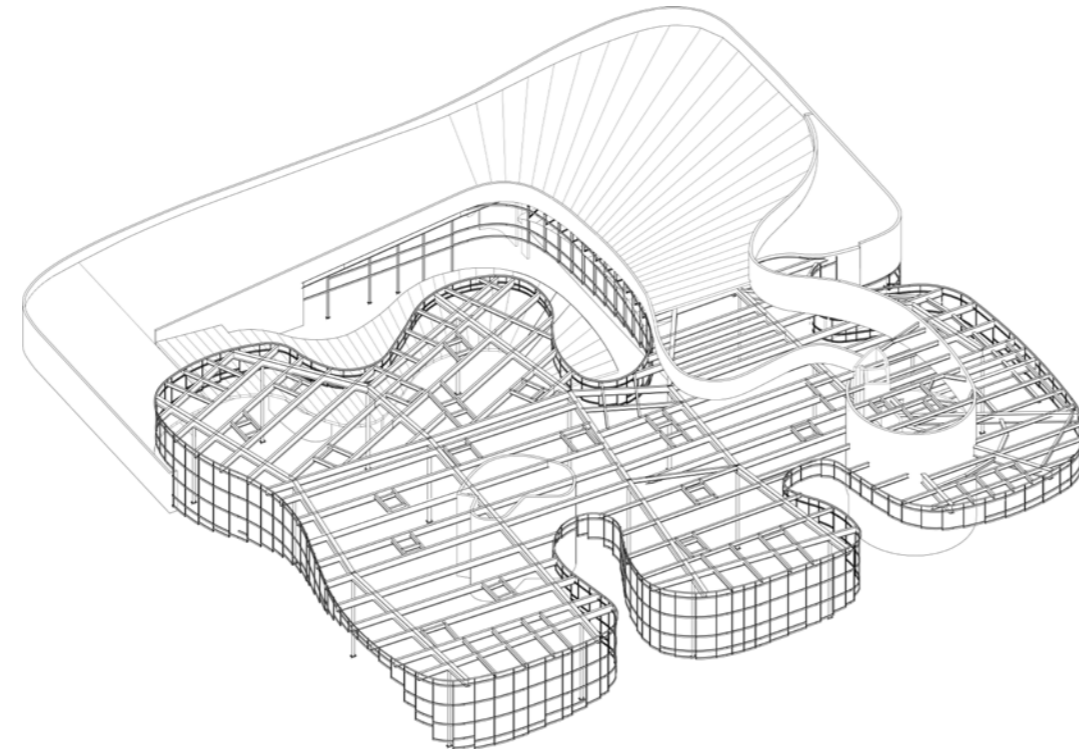
a plastic arts room, etc. They are defined as cocoons where people are cut off from the other universes, escaping from the collective area. The bubbles are the last refuge, the most intimate part of the building. They do not respond to Cartesian logic either. The distance between them depends on their area of influence and on their scale. The colour and the materials of the principal space bring out variations of light and colouring that contrast with the material nature of the bubbles.

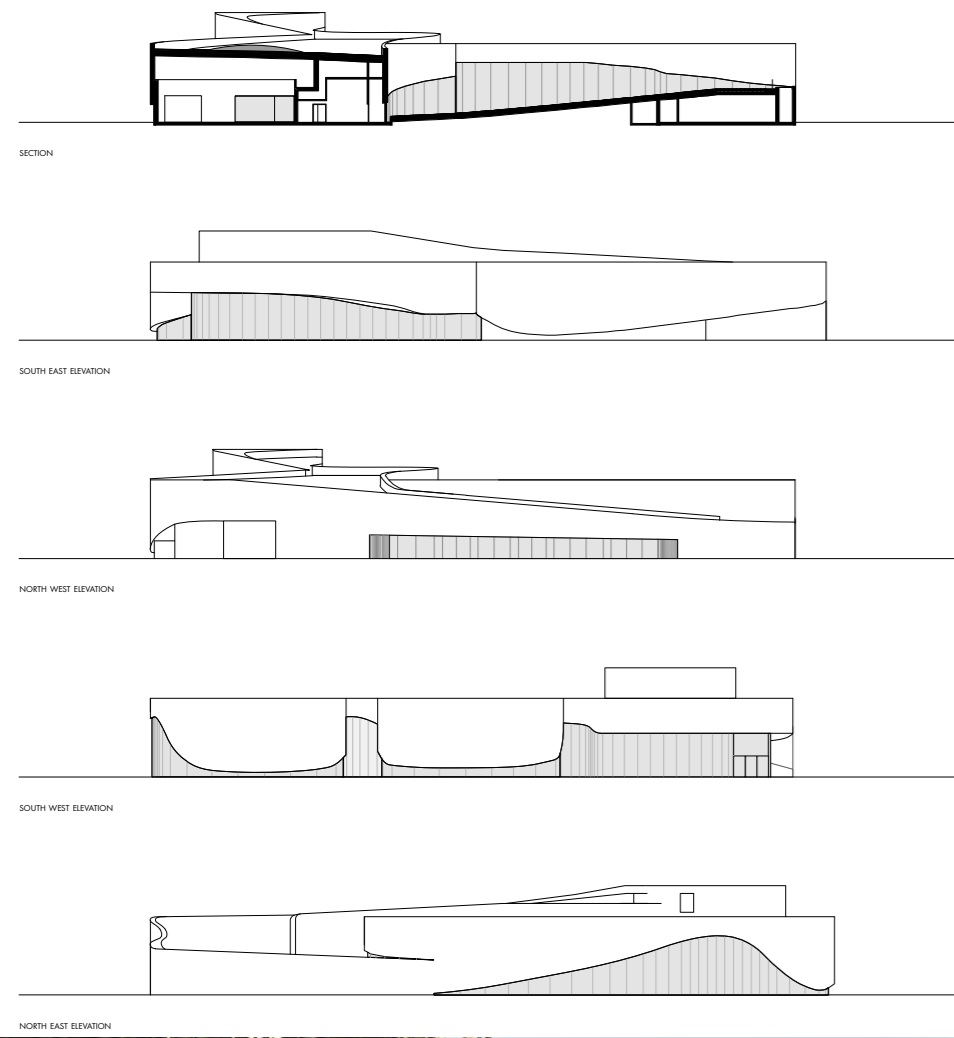
The space is fluid, and the multiple routes offer constantly renewed viewpoints. The promenade turns into a process of revealing the various universes. The unfolding of the outer envelope accentuates this impression of infinite space. In this “ineffable” space, the notion of gravity seems to disappear – the roof and walls appear to float. This sophistication generates a “plastic acoustic” that lends this new place an atmosphere which transports and re-examines the relationship with the body and fluidity. There is no unequivocal reading of the space; the perception one has of it reveals a complexity and an unexpected richness. It is a place of freedom.

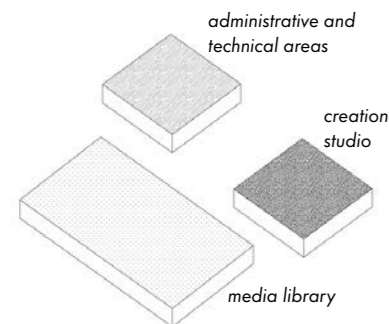
Photography: Eugeni Pons, David Romero-Uzeda



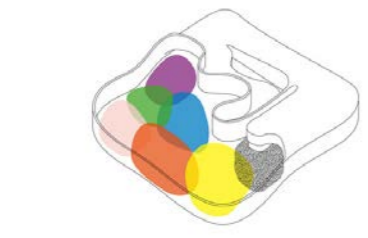
- ground floor
- universe 1 - forum 1
 - universe 2 - multimedia 2
 - universe 3 - literature 3
 - universe 4 - teenagers 4
 - universe 5 - small children 5
 - universe 6 - documentation area 6
 - group studio - multifunction 7
 - group studio / video games 8
 - group studio / storytelling area 9
 - permanent display 10
 - temporary display 11
 - cellar 12
 - large exhibition hall 13
 - multipurpose hall 14
 - creation and broadcasting studio 15
 - plastic arts workshop 16
 - administrative area 17
 - patio / sloping garden leading to terrace roof 18



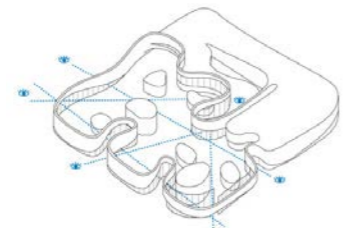




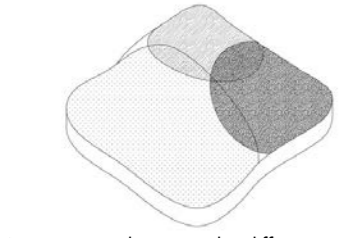
1. Programme



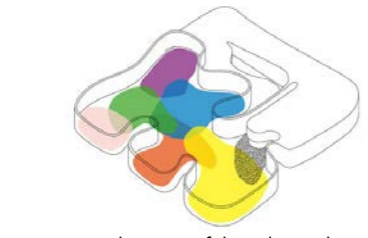
7. The six universes of the media library + creation studio



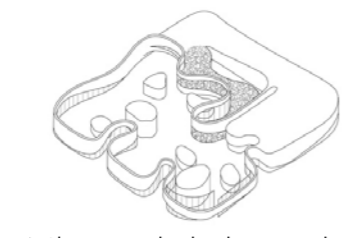
13. Areas of transparency generated by the facade



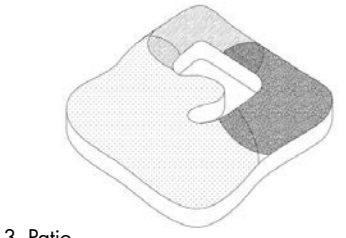
2. Interaction between the different programmes



8. Hierarchisation of the relationships between the different universes



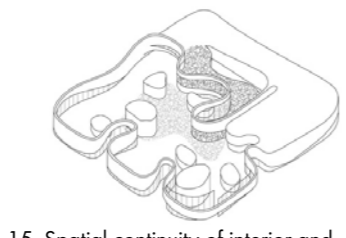
14. Sloping garden leading towards the terrace roof



3. Patio



9. Interface between the universes



15. Spatial continuity of interior and exterior accentuated by floor covering and ground surface



4. Ramp / terrace roof



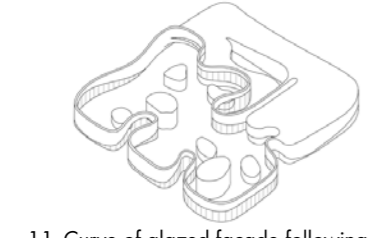
10. Position of bubbles



16. Vertical circulation and summer bar as the culminating point of the garden slope



5. Compact mass of the programme / open-plan layout of the media library



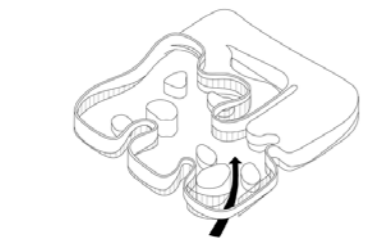
11. Curve of glazed facade following the shape of the wall



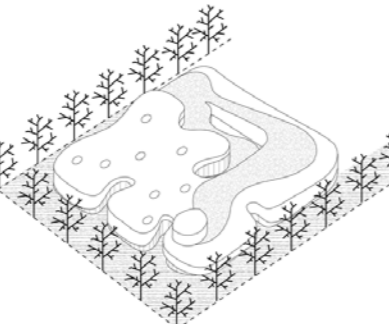
17. Overhead lighting for the media library



6. Interaction between the open-plan layout and the compact part of the programme



12. Entrance arrangements



18. Existing crown of trees as the final thickness of the building

